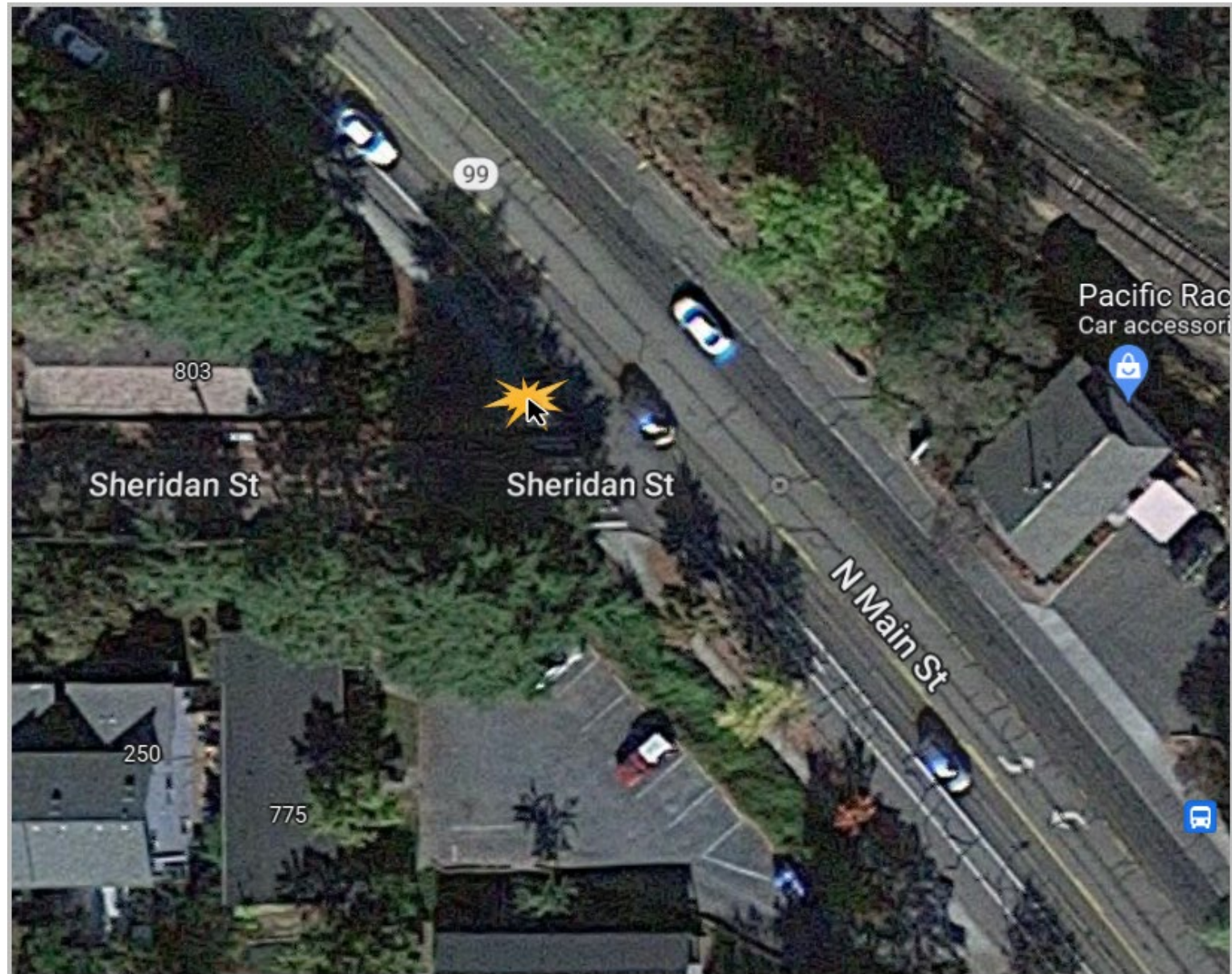


Granite Construction:
ADA Curb Ramp Schedule:
Week of Nov. 4 - 11, 2022:

Schedule Subject to Change

Next week work is scheduled at:

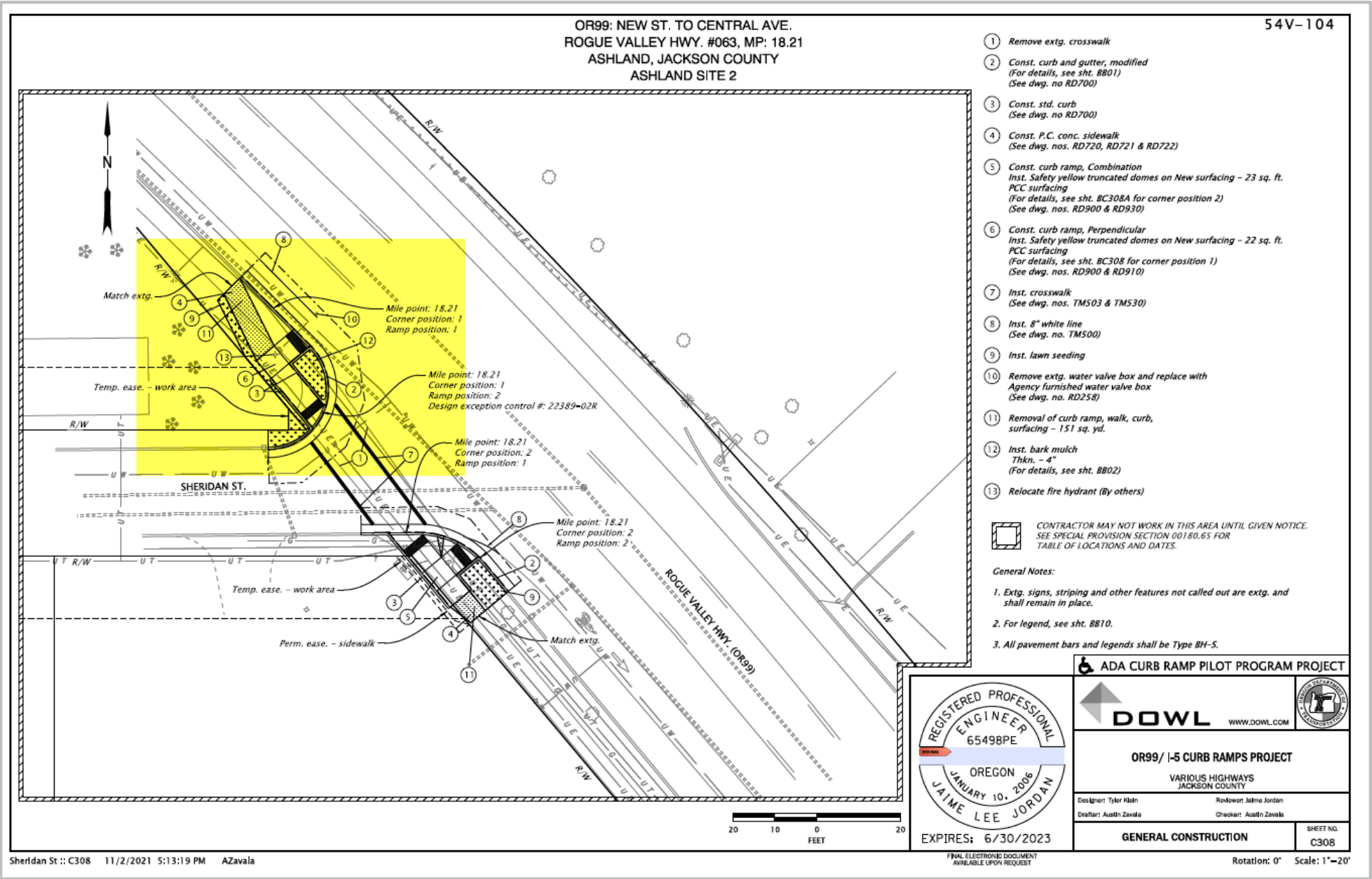
- North Main at Sheridan, north corner →
- North Main at Wimer, SW corner
- North Main at Van Ness, NE corner-
- North Main at Skidmore, SE corner
- North Main at Plaza entrance front of Mix Bakery
- North Main at Oak, ramp from Bowmer Theater
- Lithia Way at 1st Street – SE corner
- Siskiyou Blvd. at Harmony, SE corner
- Siskiyou Blvd at Normal, NE corner
- Siskiyou Blvd. at Faith, NE corner
- Siskiyou Blvd. at Tolman, NW corner
- Jefferson at Washington, (east Ashland near I-5)



North Main at Sheridan,
north corner



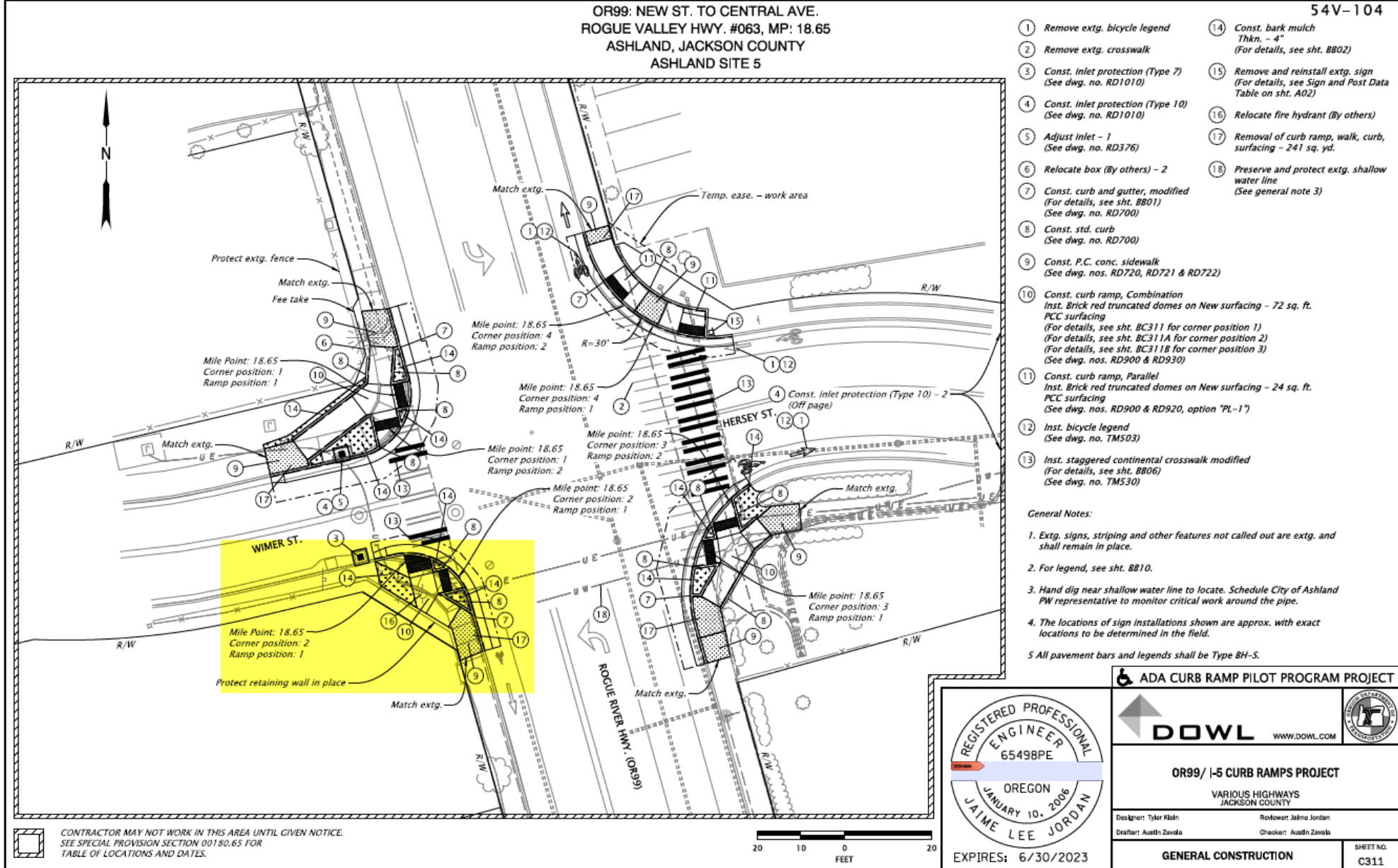
North Main at
Sheridan, north
corner



North Main at
Wimer, SW
corner



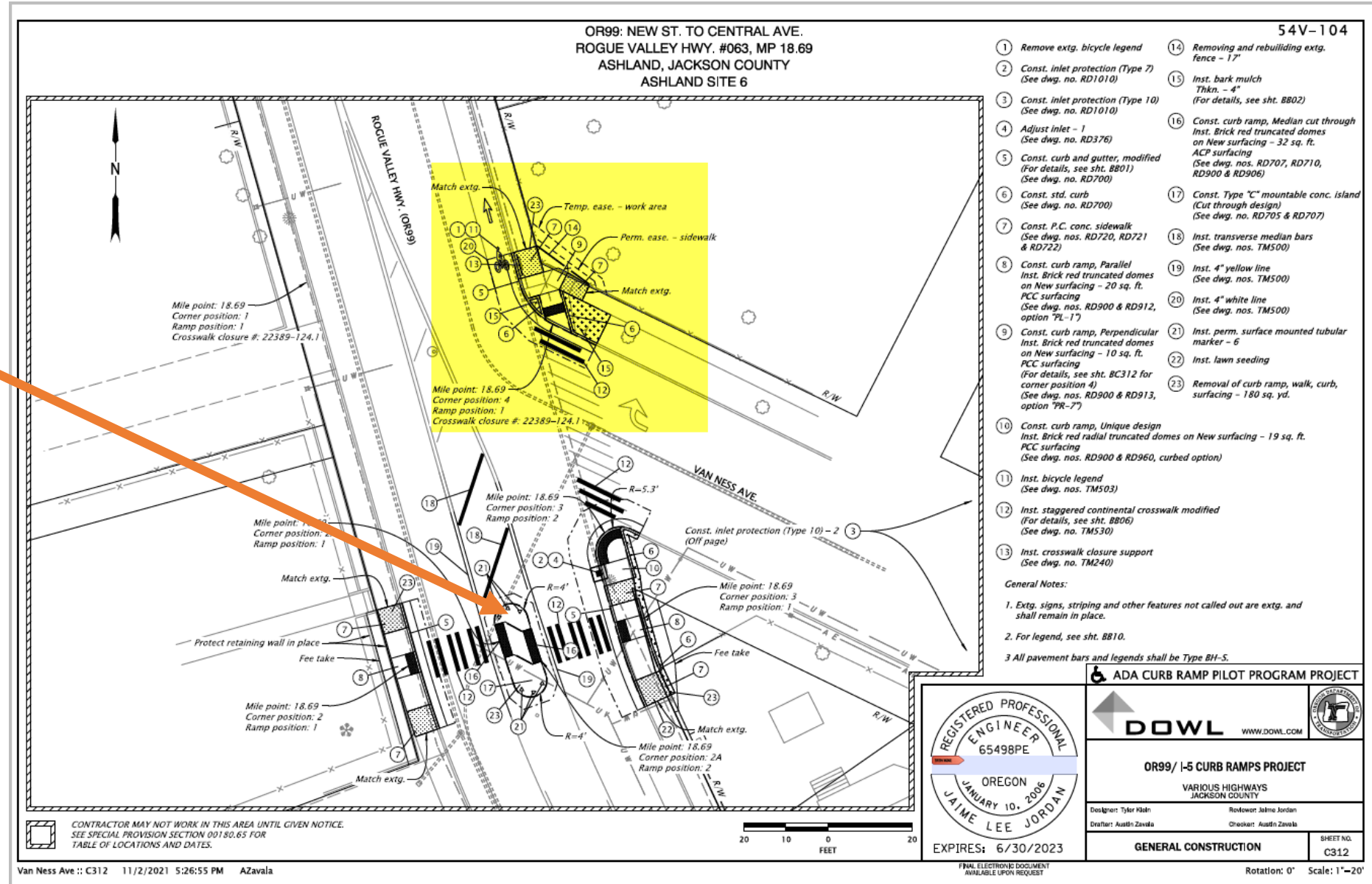
North Main at
Wimer, SW
corner



North Main at Van Ness,
NE corner.



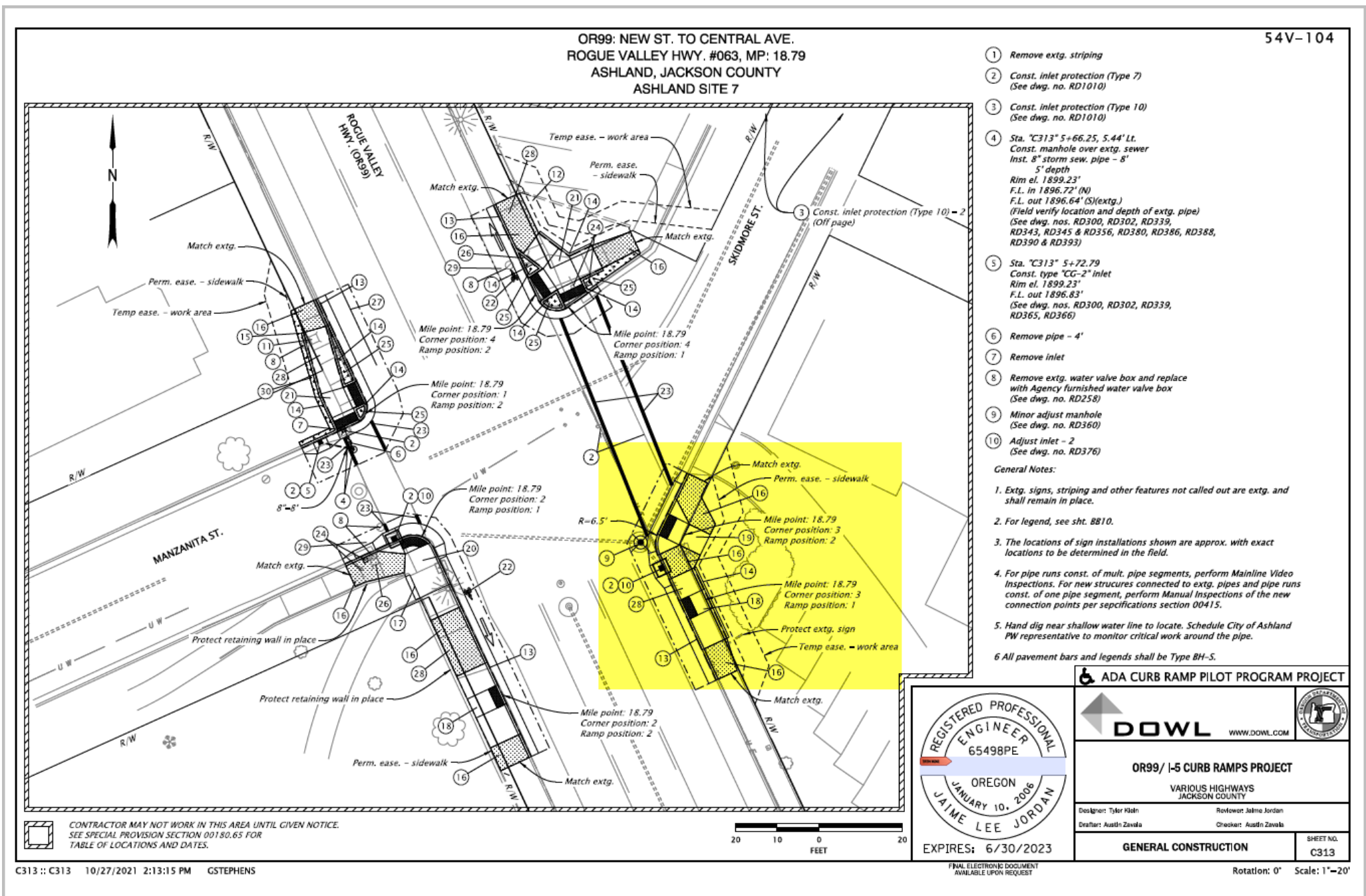
To be constructed nearby
Rapid Flashing Beacon for
pedestrians



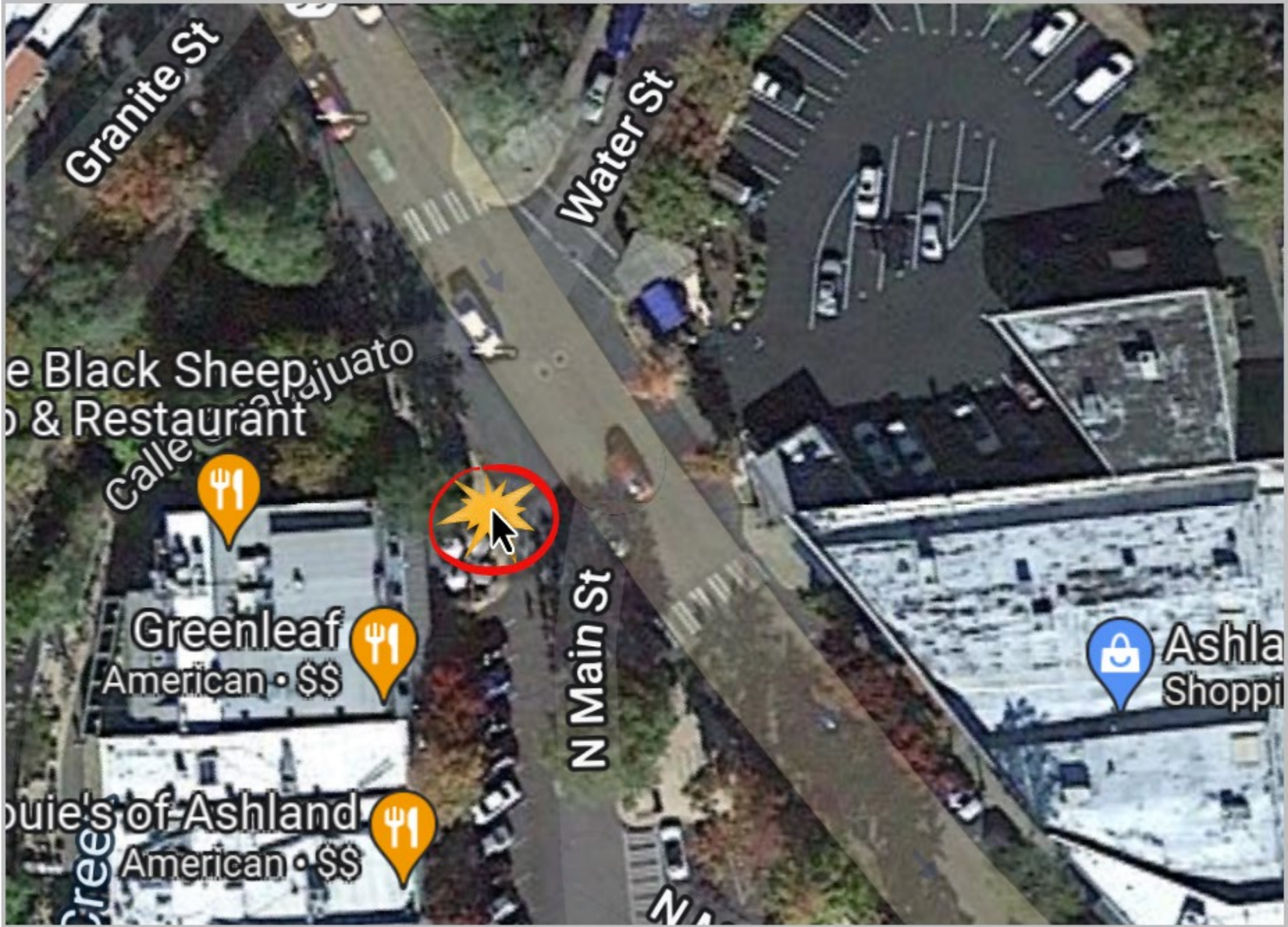
North Main at
Skidmore, SE
corner



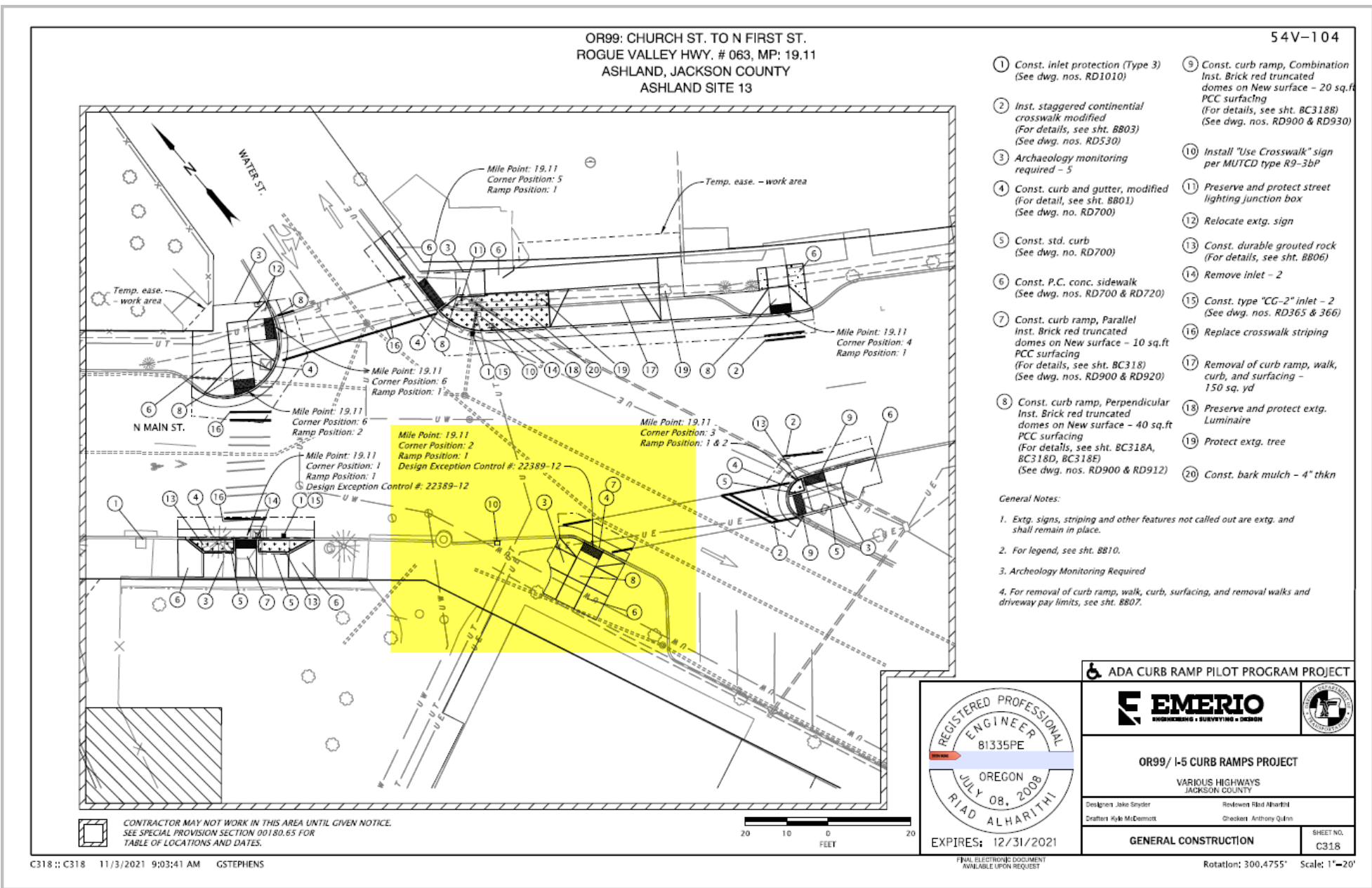
North Main at Van
Ness, NE corner.



North Main at Plaza
entrance, next to Mix
Restaurant



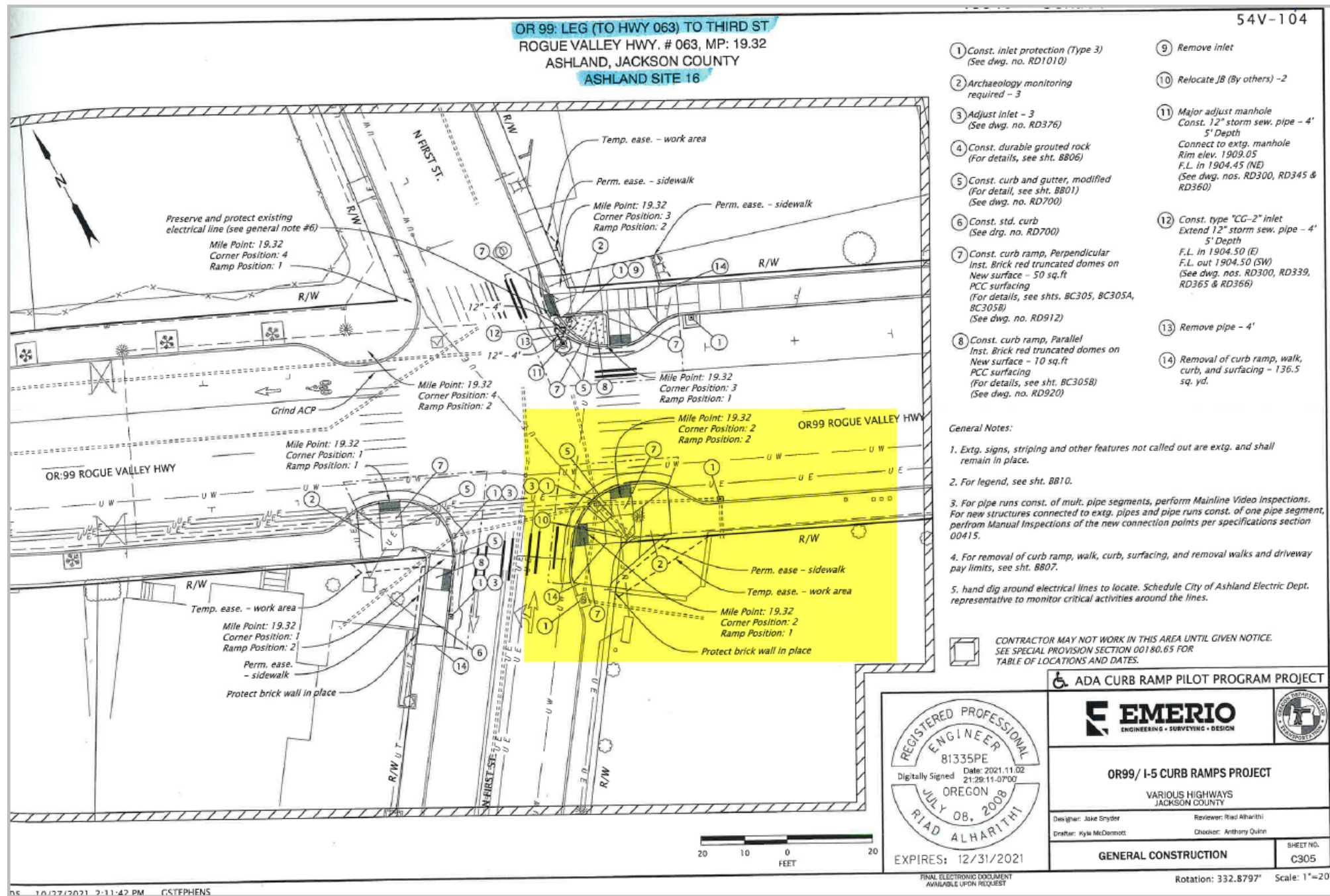
North Main at Plaza
entrance, next to Mix
Bakery



Lithia Way at 1st Street,
SE corner – across from
post office



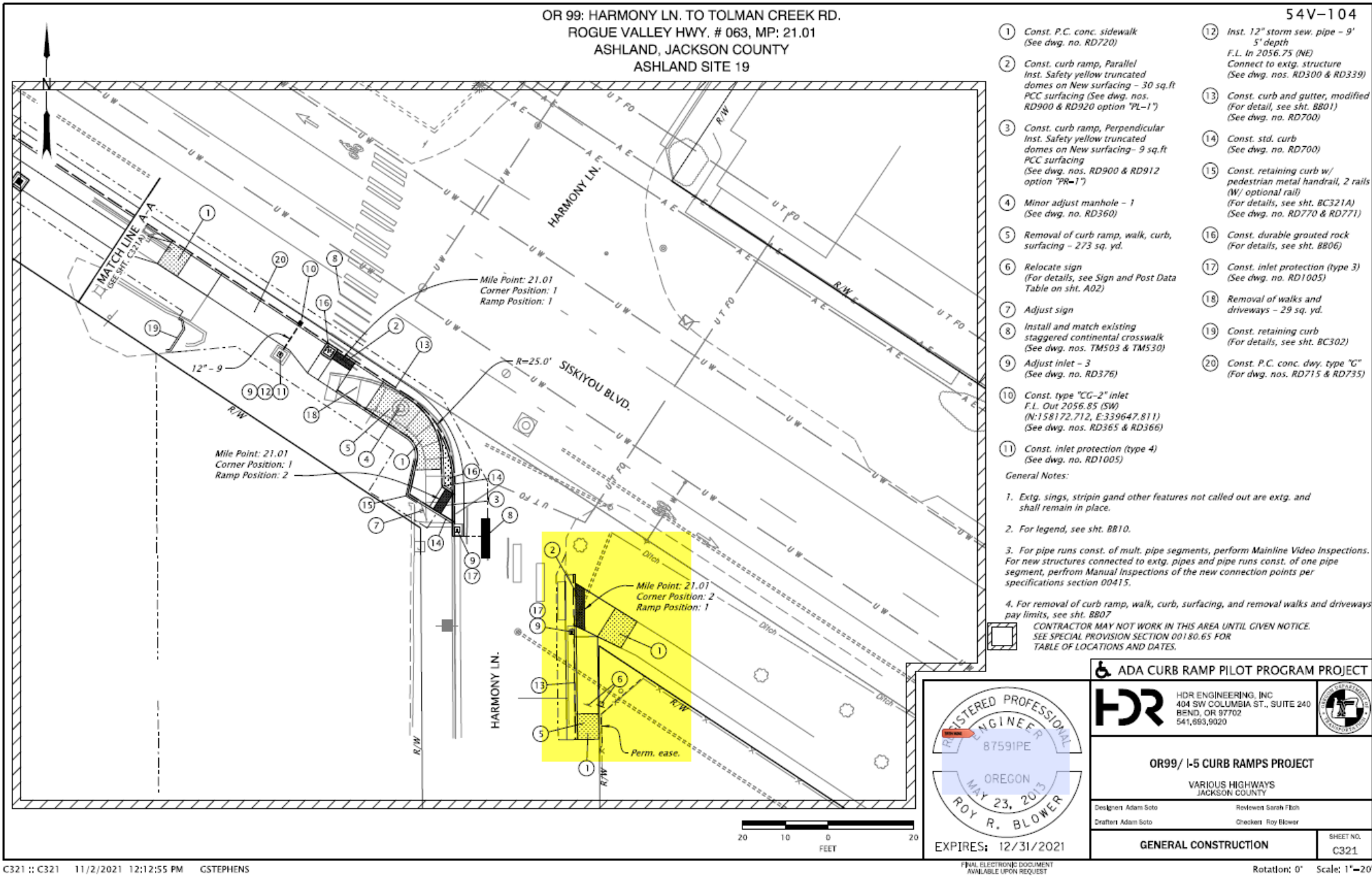
Lithia Way at 1st
Street, SE corner –
across from post
office



Siskiyou Blvd. at
Harmony, SE corner



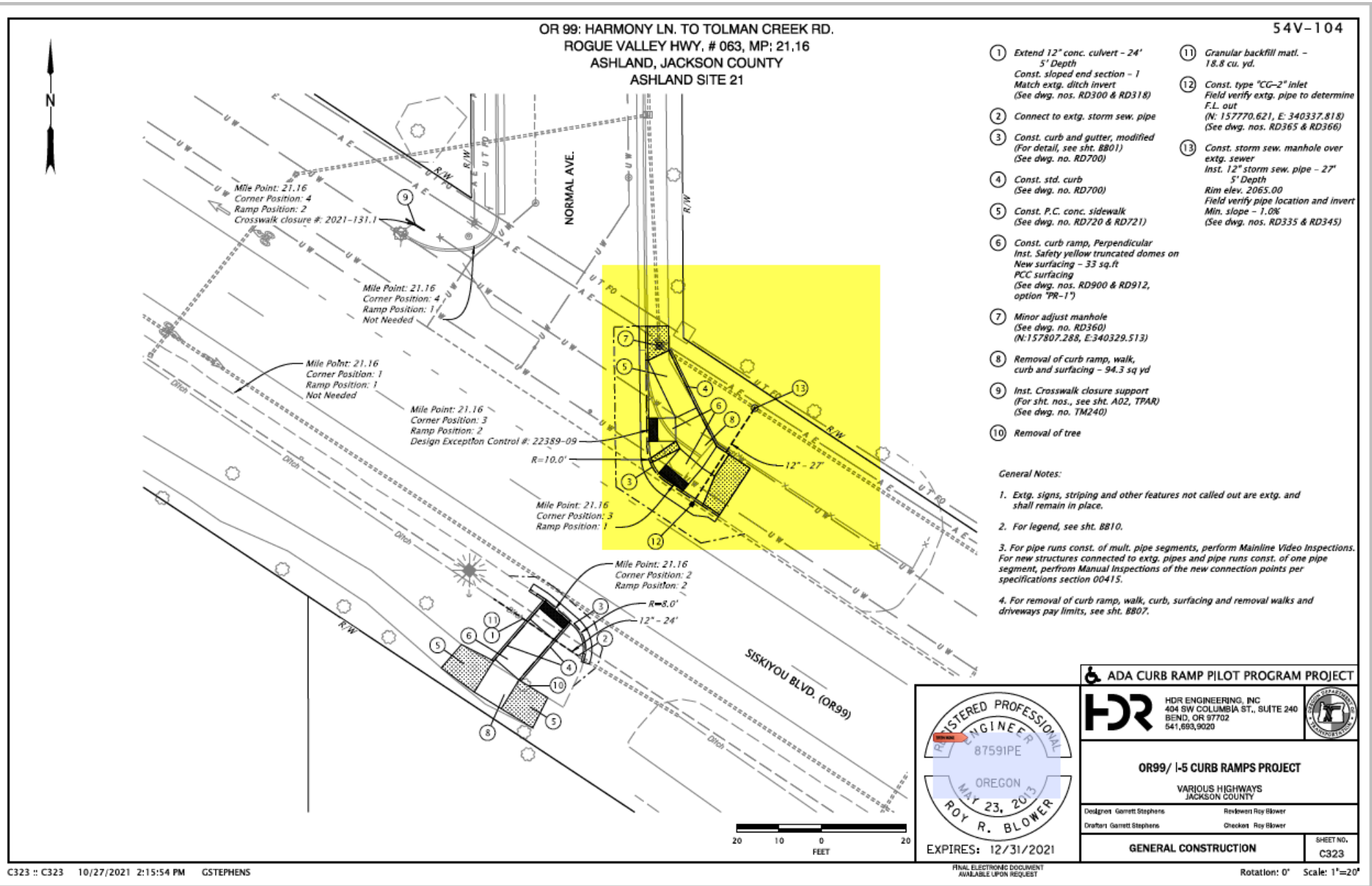
Siskiyou Blvd. at
Harmony, SE corner



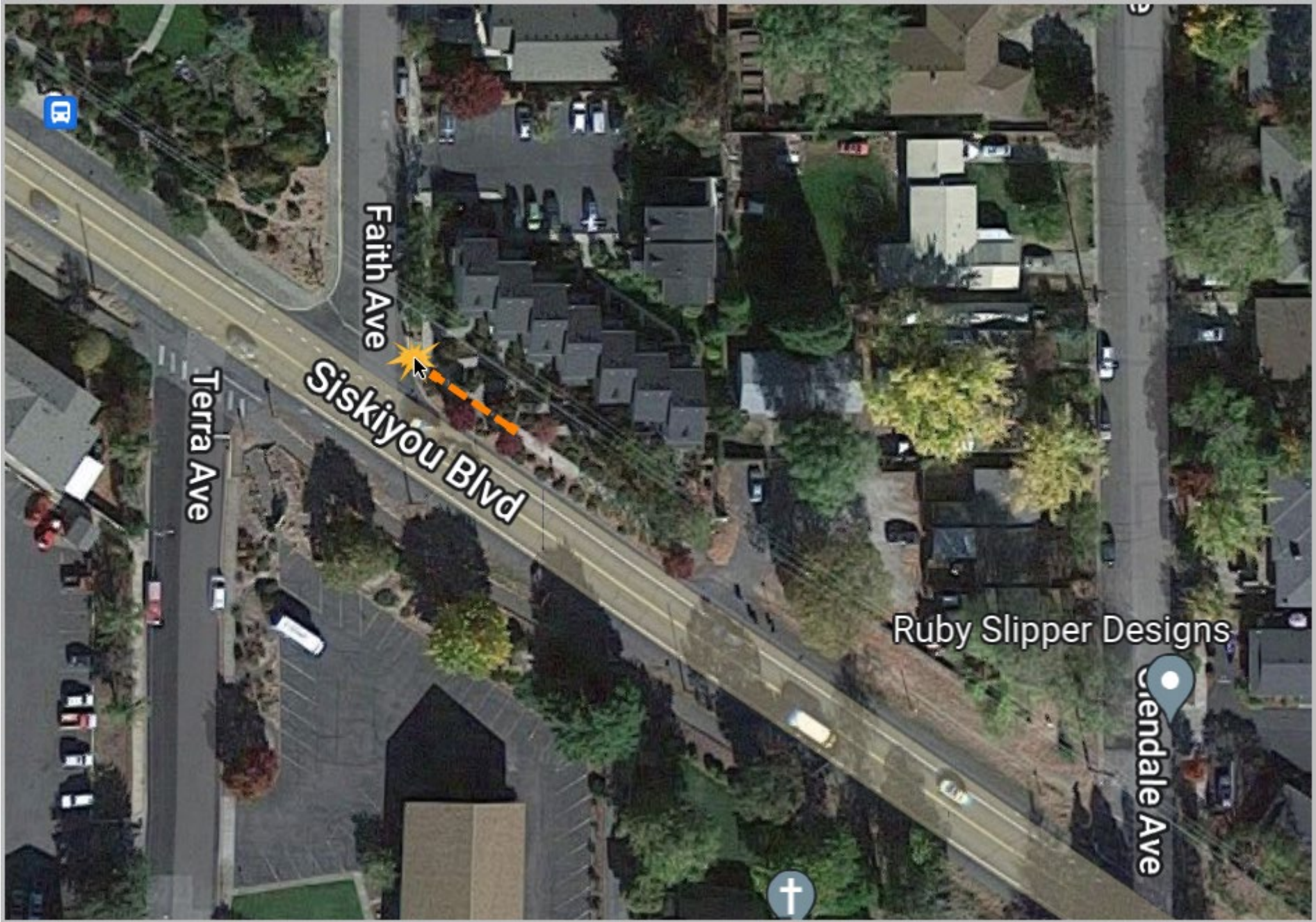
Siskiyou Blvd. at
Normal Ave., NE
corner



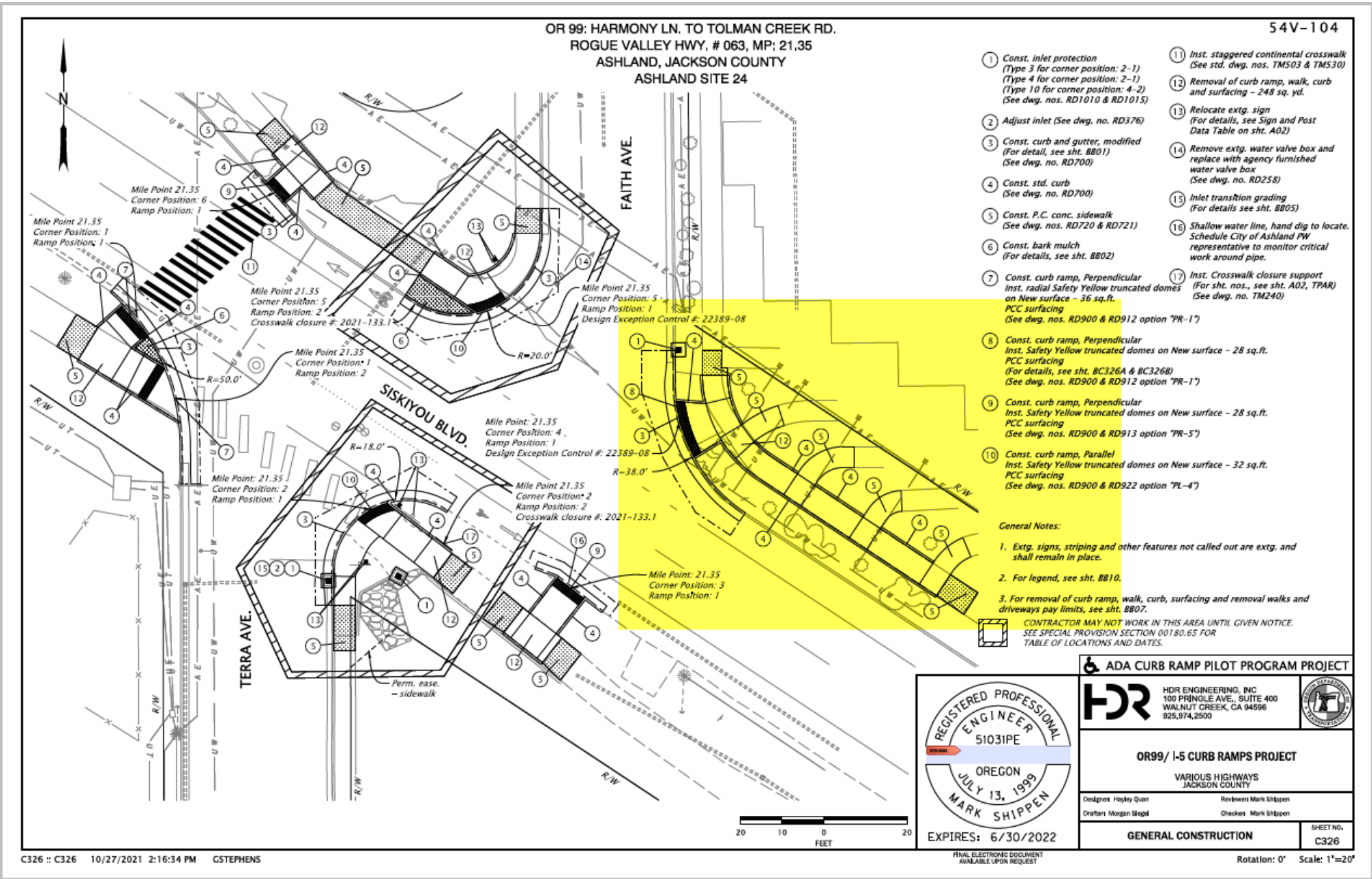
Siskiyou Blvd. at
Normal Ave., NE
corner



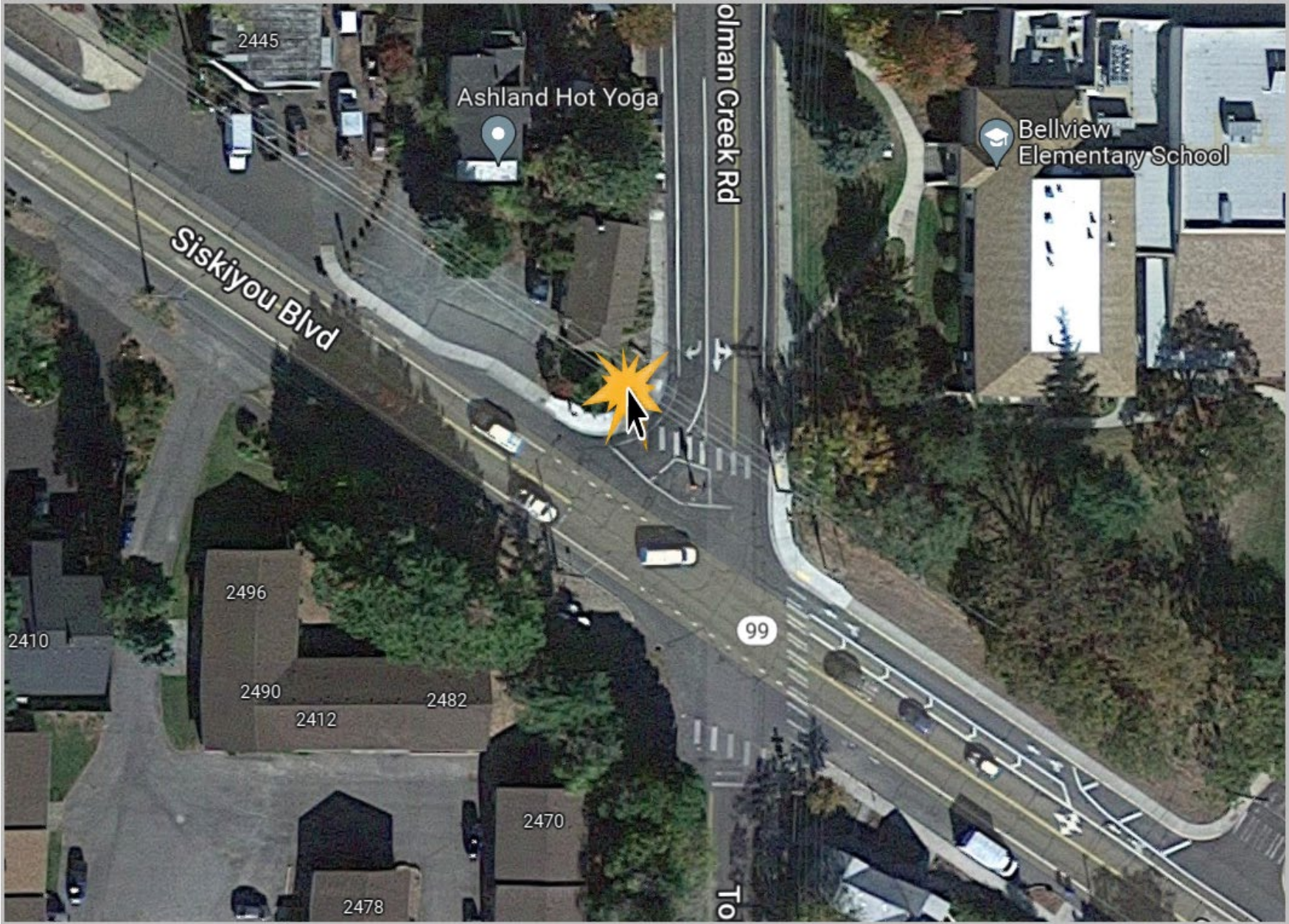
Siskiyou Blvd. and Faith Street, NE corner with sidewalk adjustment for elevation.



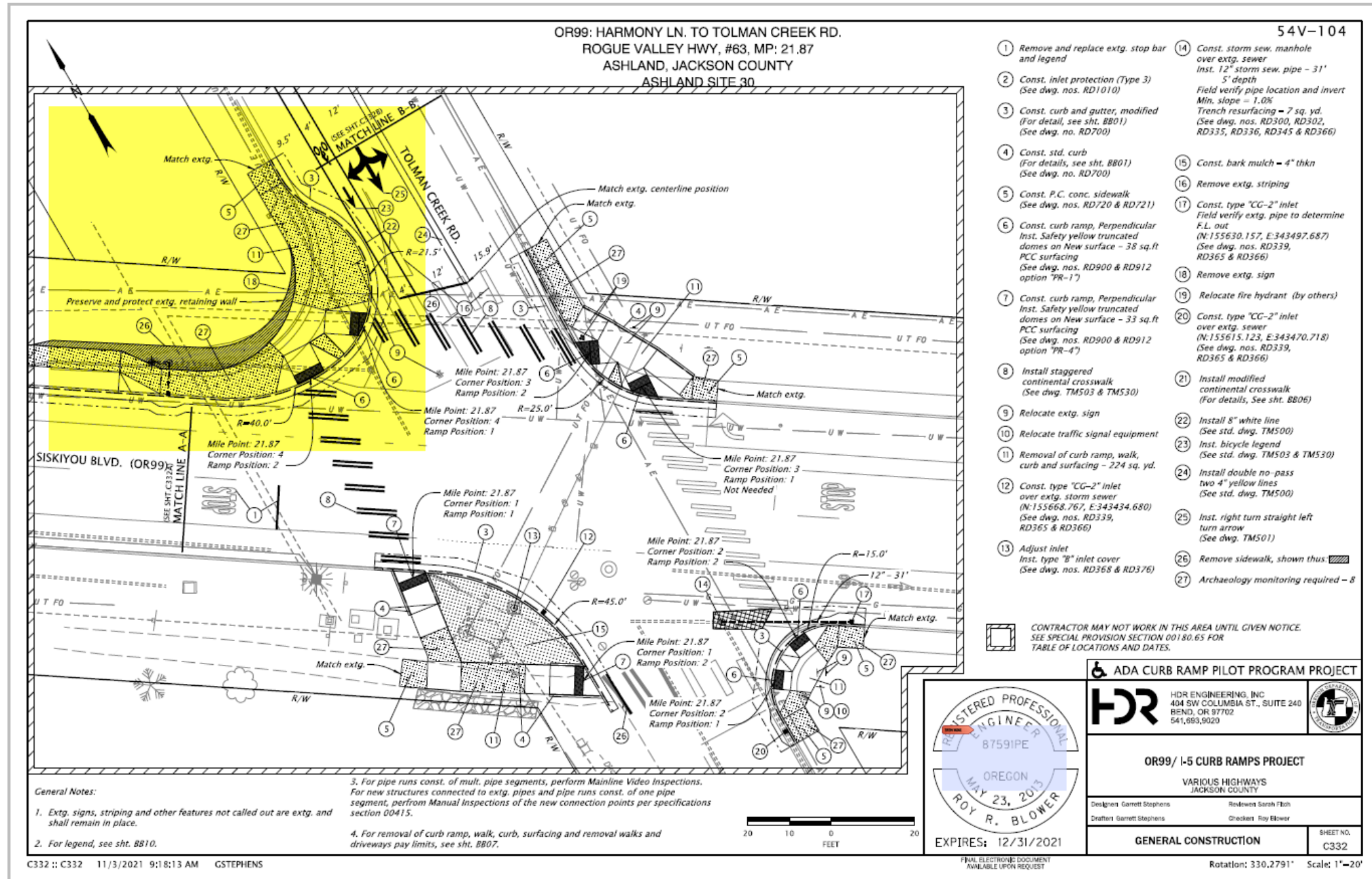
Siskiyou Blvd. and Faith Street, NE corner with sidewalk adjustment for elevation.



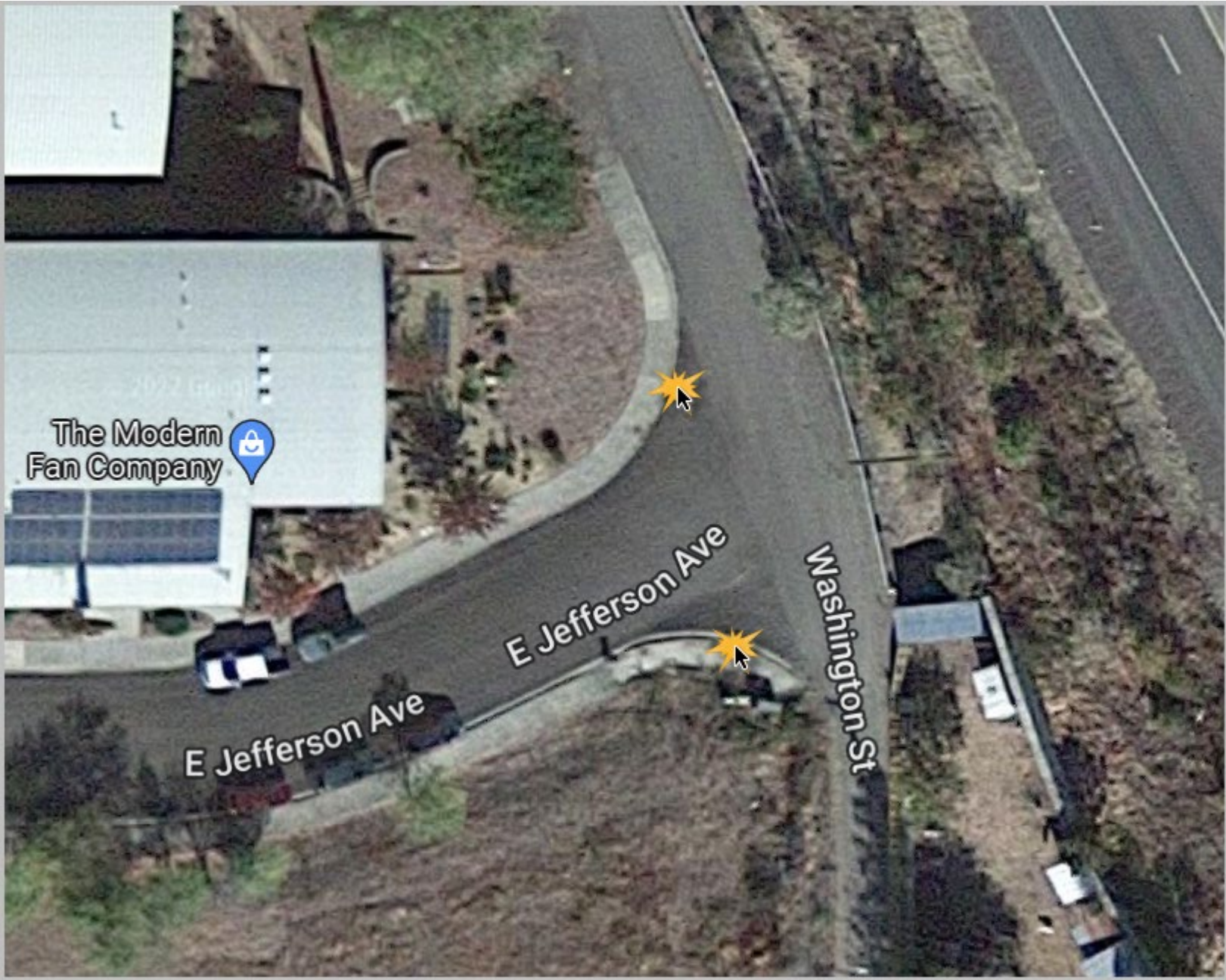
Siskiyou Blvd at Tolman
Creek, NW corner.



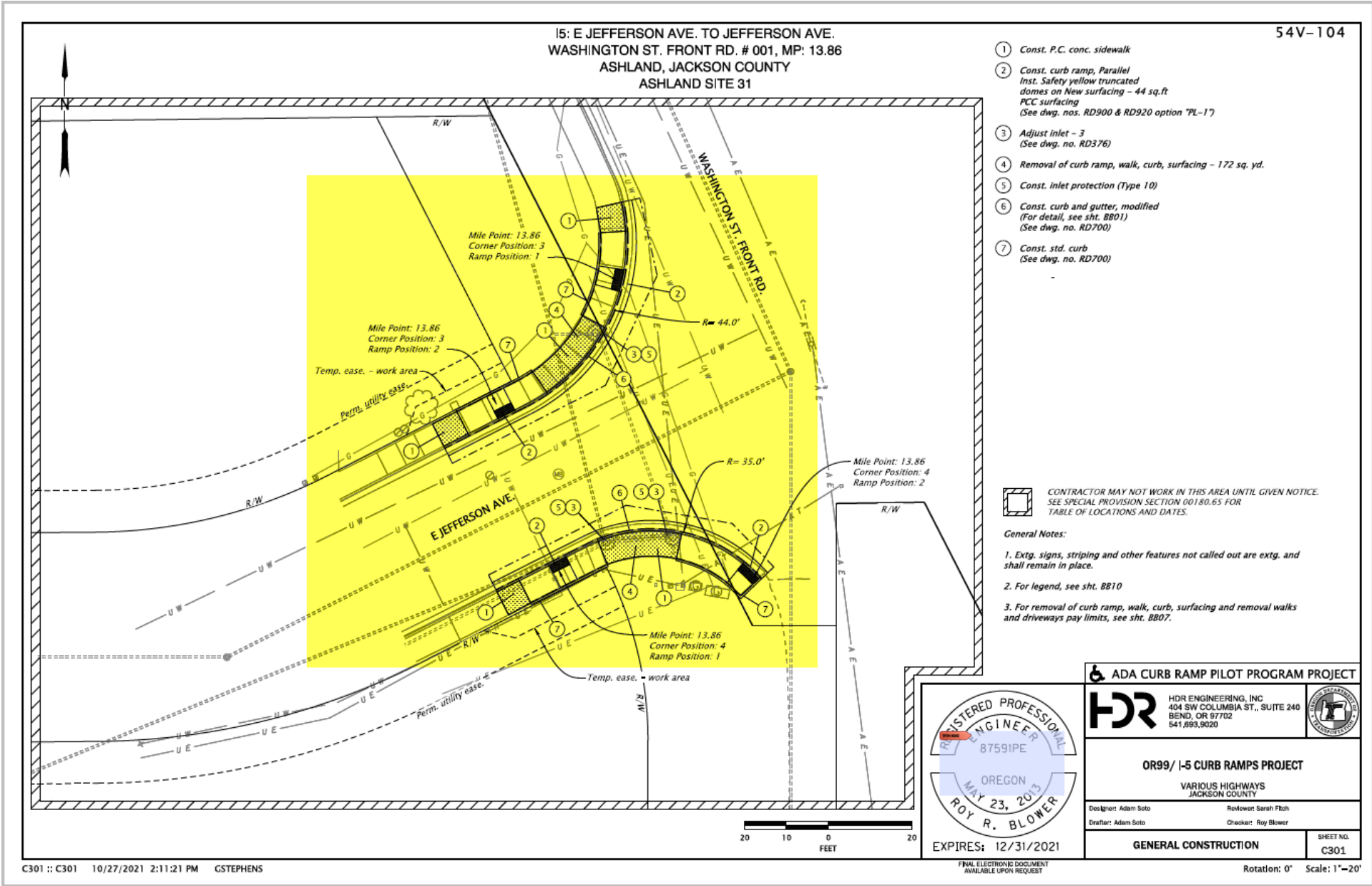
Siskiyou Blvd at Tolman Creek, NW corner.



East Jefferson Ave at
Washington Street, adjacent
to Interstate 5



East Jefferson Ave at
Washington Street,
adjacent to Interstate
5



Washington
Street at Jefferson
Ave.



Washington
Street at
Jefferson Ave.

